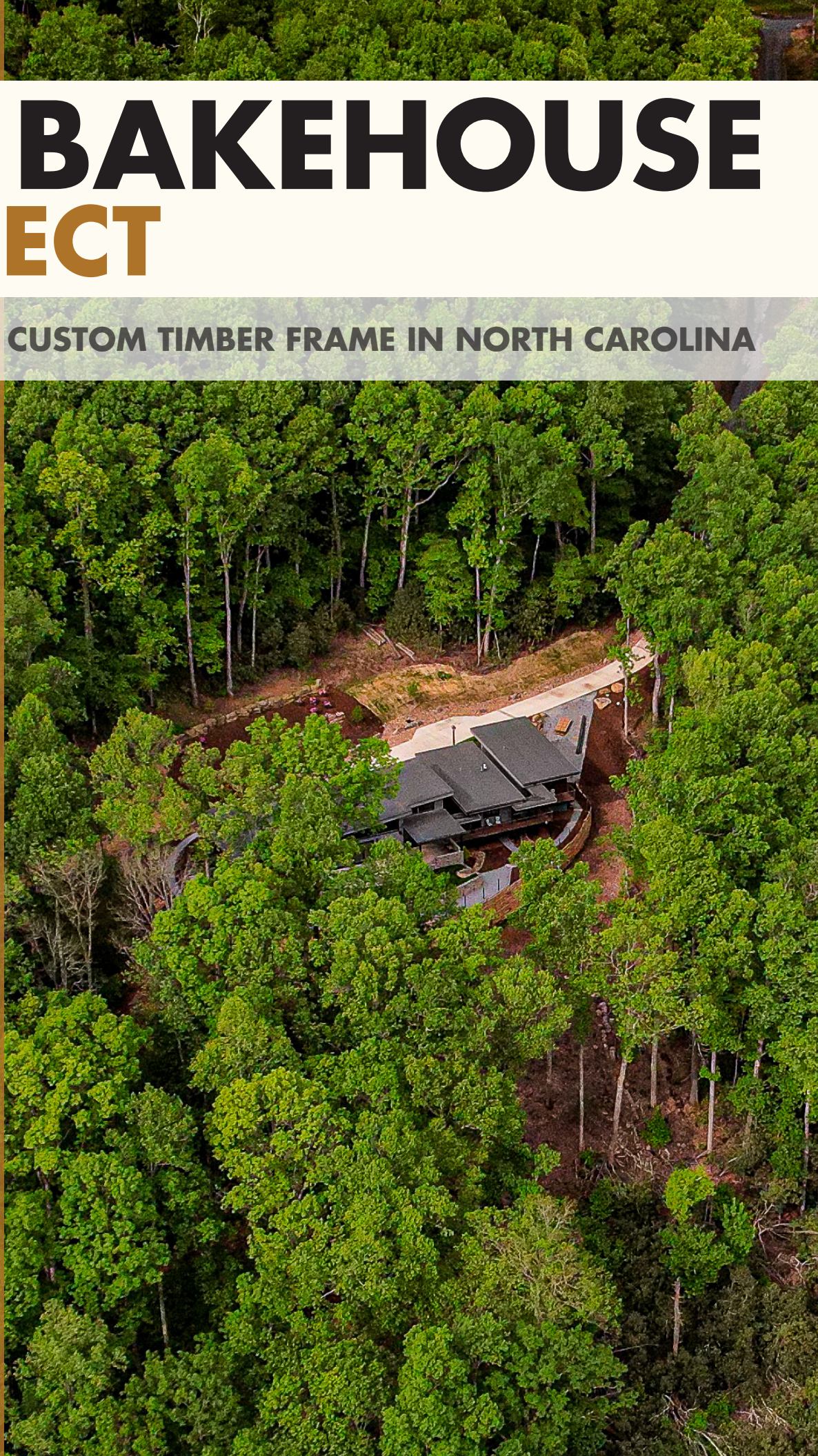


# THE BAKEHOUSE PROJECT

STEP INSIDE: A CUSTOM TIMBER FRAME IN NORTH CAROLINA

*Woodhouse*





# HOME DETAILS

The main home boasts an area of 2,300 square feet, complemented by additional "Pods" that provide 576 square feet each for a total of 3,452. This unique design encompasses a total of three bedrooms, accommodating a comfortable living experience, along with three full bathrooms and an additional half bathroom for added convenience.



**FLETCHER, NC**



**3,452 SQ. FT.**



**3 BEDS**



**3.5 BATHS**





# THE BACKSTORY



When Marci and Barney Danzansky set out to build their dream home in the Blue Ridge Mountains of North Carolina, they didn't know what a timber frame was. They just knew they needed a place for family to gather, ideally in the shelter of something with mountain-modern style.

**"I had no idea what a timber frame home was—especially not a modern timber frame home," Barney recounts. "I pictured a cabin in the woods with wood pieced together like a log cabin."**

The couple shopped around and were eventually connected with Woodhouse by Jade Mountain Builders, who had completed a mountain-modern Woodhouse home nearby. Woodhouse was able to not just translate the Danzansky's design, created by local design and architecture firm BCA, to a Woodhouse timber frame, but also walk them through the benefits and basics of timber frame construction and provide a preview of how the home would really come to life.

**"When they did their original pricing, they generated this beautiful fly-through that really helped us visualize what it is that we were buying from them. It helped us recognize things that we thought were missing as well as things that we wanted to add, because we could actually see it," Barney explains. "And then, I could see what was going on all the time through their web interface and client dashboard. They are very diligent with how they catalog and release their drawings, ensuring there is never any confusion about the agreed-upon terms. They have a great system in place for communication."**

The designs were finalized, and the Danzanskys embarked on their construction journey, erecting a 2,300-square-foot main home that shares a roof with two 576-square-foot “pods” where their adult children can stay when visiting. One pod sits over a garage for storage, the other over a crawl space.

**“We have detachable bedrooms from the main house so that we could have long-term guests come stay with us and not feel like we’re living on top of one another,” Barney explains.**

From felling the first tree to receiving a certificate of occupancy, the Danzanskys completed their home in just 13 months. Inside the main home, the timber frame structure allows for sprawling, open interior spaces which the Danzanskys have outfitted with striking modern furnishings. In the back, a wall of folding glass doors frames up spectacular mountain views.

**“I found it to be a fun process where, because of the nature of the construction, there was progress every day,” Barney says. “And we didn’t have a single argument...Think about owner-financing, owner-designing, owner-building, owner-decorating a project and not getting into a fight with a spouse .... Woodhouse made sure everything just fell into place.”**

From floor plans to finishing touches, the Danzanskys worked with Woodhouse to achieve a remarkable dream home that’s anything but a little wooden cabin in the woods.



**“It’s a great house because they’ve got great people to work with at Woodhouse. They’re attentive, concerned, and available. And they’re excited about the product that they’re building, and they’re excited about supporting us in the field. We were able to have a great time throughout the entire process.”**

**-Barney Danzansky, Woodhouse Homeowner**

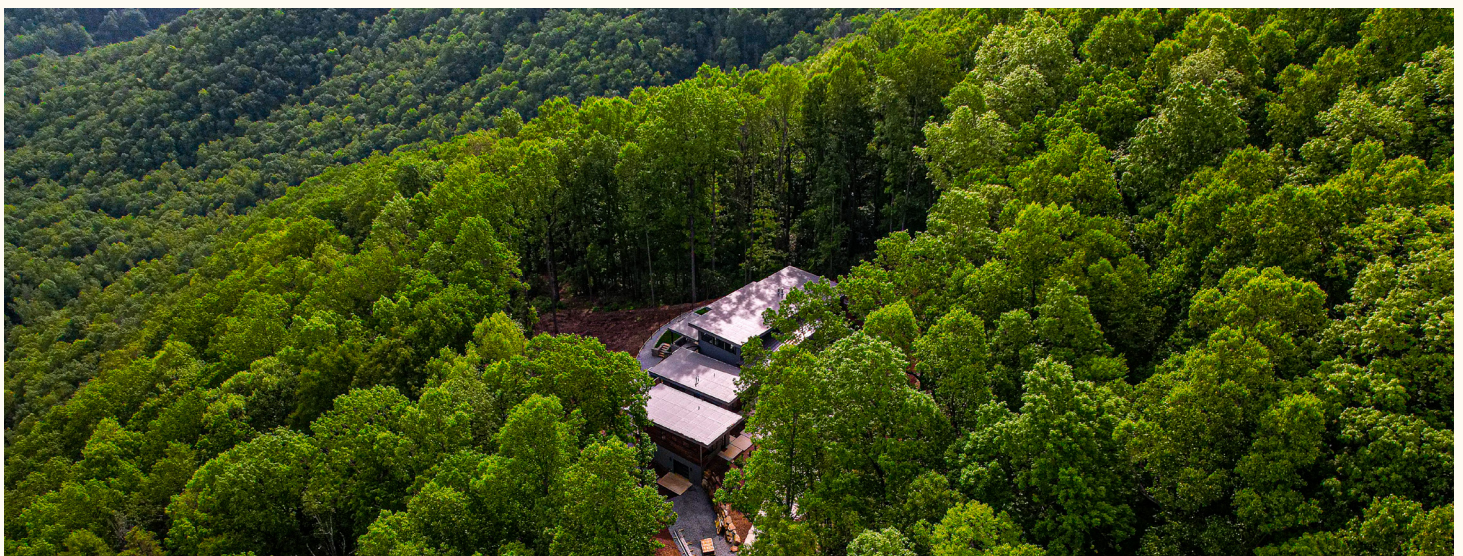
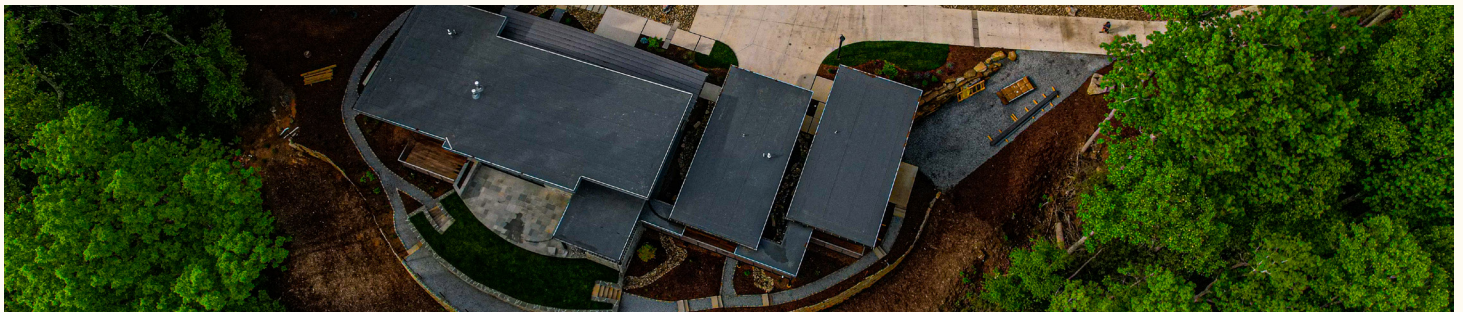












**DRONE FOOTAGE**  
— [VIEW HERE](#)





# LET'S BUILD YOUR DREAM HOME!

*Woodhouse*<sup>®</sup>

THE TIMBER FRAME COMPANY<sup>™</sup>

[TIMBERFRAME1.COM](https://timberframe1.com) |      

WE WOULD LOVE TO TALK WITH YOU ABOUT YOUR UPCOMING  
TIMBER FRAME PROJECT. FOR FASTER SERVICE, PLEASE CALL US AT: 800-227-4311