

# TOP 5 MOUNTAIN-VIEW PLANS



*Woodhouse*  
THE TIMBER FRAME COMPANY™





# CREEKROCK

**SQUARE FOOTAGE: 1,405**  
**BEDROOMS: 3 BATHS: 2**

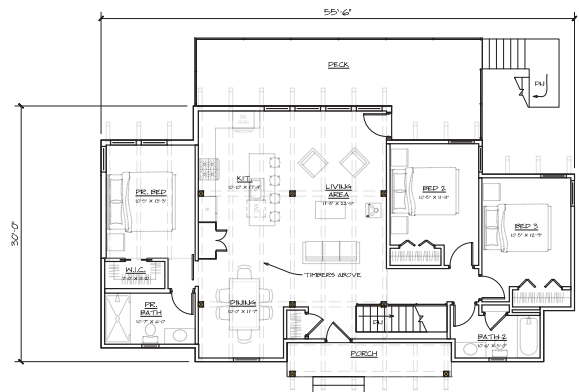


## CREEKROCK

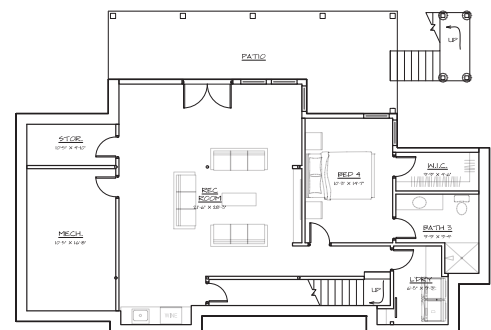
This modified version of the WaterRock takes the sleek modern aesthetic and expands the footprint of the home. The main floor has 3 bedrooms and 2 bathrooms, with designs for an optional walk-out basement featuring another bed and bath, making it perfect for families, with extra room for when guests come to visit.

The patio outside, for enjoying the picturesque mountain views, can be adapted into an elegant double-decked design when a walk-out basement is available. The single-pitch roof has also been lowered to create a more cozy feeling in the great room, where the family and friends can gather to watch snowfall through the floor-to-ceiling windows, next to the wood stove, with a hot cup of cocoa in hand.

**VIEW HERE**



FIRST FLOOR - 1405 SQ. FT.



OPTIONAL LOWER LEVEL - 1017 SQ. FT.



# LAURELCREEK

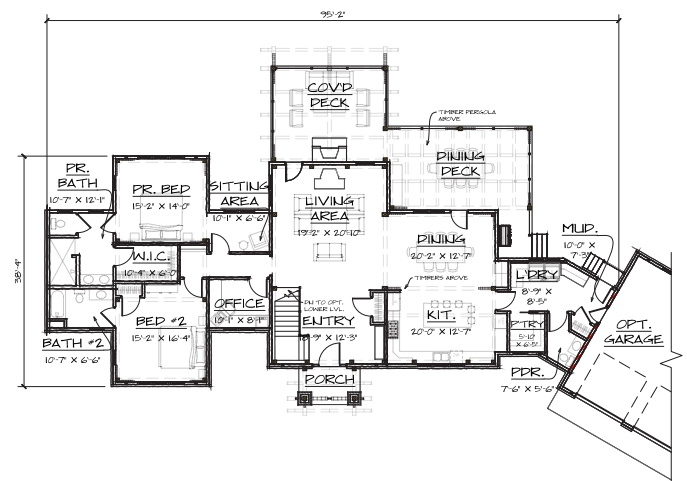
SQUARE FOOTAGE: 2,444  
BEDROOMS: 2 BATHS: 2



## LAURELCREEK

The LaurelCreek is the ultimate age-in-place design with two bedrooms and two and a half baths spread across 2,444 square feet. The timber frame design of the home incorporates graceful curves that add a sense of elegance to the overall aesthetic. The large gable embellishments with brackets further enhance the visual appeal of the home.

One of the standout features of LaurelCreek is the dining deck, which includes a timber pergola and is perfect for hosting large gatherings and enjoying outdoor living. The home also includes functional support spaces such as an office, mudroom connector, and an optional three-car garage.



FIRST FLOOR - 2444 SQ. FT.

**VIEW HERE**





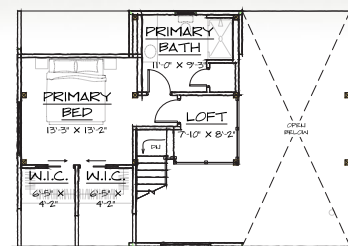
# MADISON

**SQUARE FOOTAGE: 1,582**  
**BEDROOMS: 3 BATHS: 2**

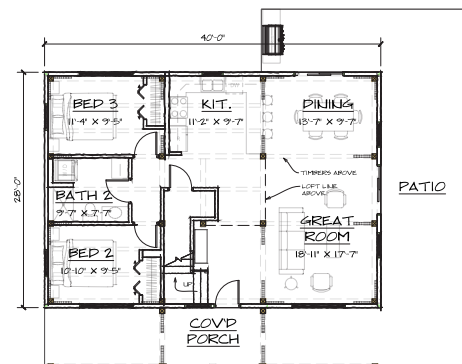


## MADISON

The Madison invites you in with a large and elegant timber-framed covered porch, that leads to a convenient 3 bedroom and 2-bathroom layout in a 1,582 sq ft package, perfect for a family. With this open design, the living room, dining room, and kitchen all merge into one, forming a spacious great room. The surrounding windows let in all the natural light and views that you need. After a well-cooked meal, head out to the wrap-around patio for some good time with friends and family, or enjoy the warmth from the modern hanging fireplace. Once the night comes to an end, head up to the loft where you'll find the primary bedroom featuring 2 spacious walk-in closets, lofted timber frame ceilings, and the primary bathroom right around the corner. On the main floor, the other 2 bedrooms are split with a bathroom perfectly sized for sharing.



SECOND FLOOR - 462 SQ. FT.



FIRST FLOOR - 1,120 SQ. FT.

**VIEW HERE**



# ADIRONDACK V3

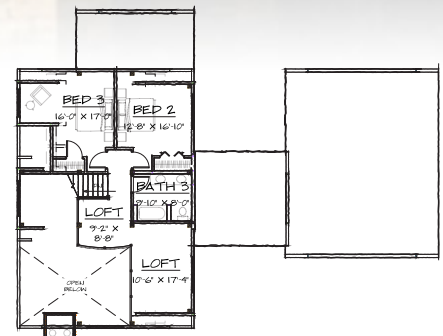
SQUARE FOOTAGE: 2,689  
BEDROOMS: 3 BATHS: 2.5



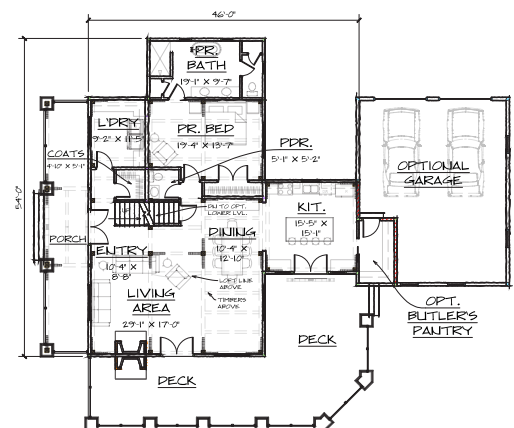
## ADIRONDACK V3

The Adirondack Cottage V3, is a spacious 3-bedroom, 2.5-bath retreat spanning 2,689 square feet. Ideal for larger families or a vacation rental, this version expands the luxurious 1st-floor bedroom suite and adds a connector for a roomy kitchen and versatile dining spaces. Opt for the lower level to unlock additional bedrooms, bathrooms, or a recreation room. Embracing the craftsman cottage tradition, it features curved timber elements, customizable siding trim, and uniquely tapered chimneys and piers. Outdoors, a covered porch, and an expanded deck with an outdoor fire-place beckon you to savor the natural surroundings. Timber floor joists create an authentic, inviting atmosphere, blending modern living with timeless design for an exceptional experience.

[VIEW HERE](#)



SECOND FLOOR - 836 SQ. FT.



FIRST FLOOR - 1853 SQ. FT.





# GREATCAMP

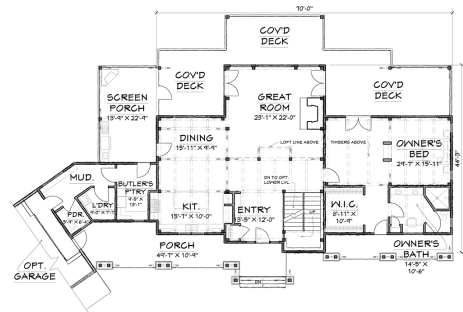
**SQUARE FOOTAGE: 4,318**  
**BEDROOMS: 3 BATHS: 3.5**



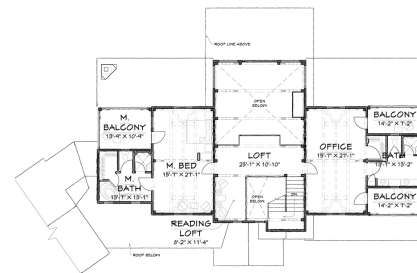
## GREATCAMP

Boasting an expansive square footage of 4,318 square feet, the GreatCamp is a tribute to the bygone Adirondack style. With 3 bedrooms and 3.5 bathrooms, this timber frame home is perfect for summer gatherings or a romantic evening for two relaxing by the fire. The welcoming entry leads to the full beauty of the wide-open floor plan. The GreatCamp seamlessly integrates a generous dining room, an epicurean kitchen with butler's pantry, and a large inviting great room into one beautiful open space. On the second floor, the same careful attention to detail and design abounds. Bedrooms and bathrooms are also well-proportioned, offering style and space in this stunning timber frame home.

**VIEW HERE**



FIRST FLOOR - 2552 SQ. FT.



SECOND FLOOR - 1766 SQ. FT.



# Woodhouse®

THE TIMBER FRAME COMPANY™

**100+** PREDESIGNED  
FLOOR PLANS

[VIEW HERE](#)

**WOODHOUSE**

800-227-4311

**READY TO START  
YOUR PROJECT?**

[CONTACT US](#)

**Woodhouse®**

THE TIMBER FRAME COMPANY™

**DREAM HOME  
BUDGET CALC**  $\begin{matrix} + & - \\ \times & = \end{matrix}$

[TRY HERE](#)

**Woodhouse®**  
THE TIMBER FRAME COMPANY™

[TIMBERFRAME1.COM](http://TIMBERFRAME1.COM) |      

**WE WOULD LOVE TO TALK WITH YOU ABOUT YOUR UPCOMING  
TIMBER FRAME PROJECT. FOR FASTER SERVICE, PLEASE CALL US AT: 800-227-4311**