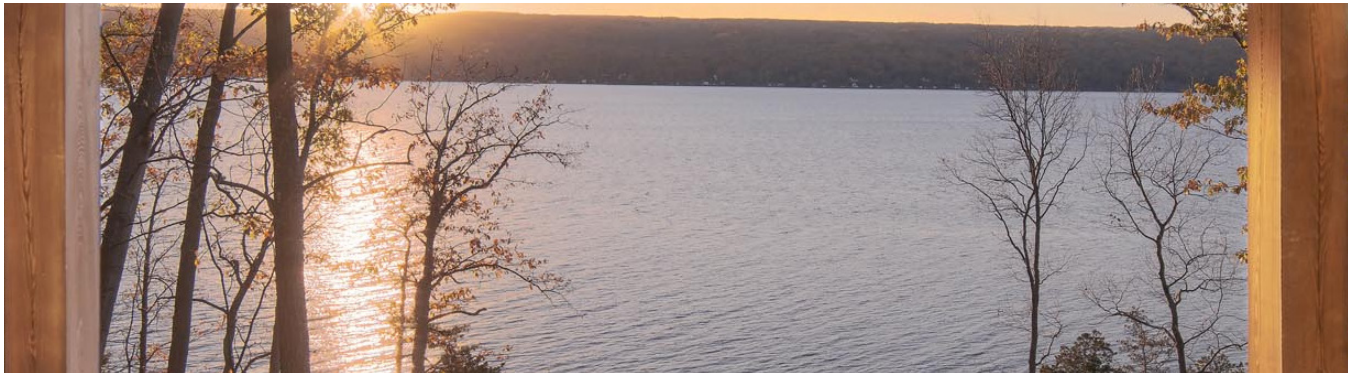


Woodhouse[®]

THE TIMBER FRAME COMPANY[™]

OUR TOP 5 WATERFRONT PREDESIGNED PLANS





Summer is right around the corner and what is more enjoyable than having friends and family over for a day near the water? These floor plans are suited best for letting in natural light and the surrounding scenic views, for an all-around waterfront feel.

Whether you are in the mountains or on the lake timber frame homes are perfect for any environment, with their natural and aesthetic look. When it comes to a home that allows friends and family to take in all the breath-taking views these homes bring the outside indoors. We believe that everyone should be a part of the conversation and with these open floor plans your family and friends will never miss a moment.

As you enjoy this selection, remember that any Woodhouse pre-designed floor plan can be modified to meet your exact vision, so don't worry if there are details you would like to change: integrating your desires is a key part of our beloved designed process. With the help of our experienced in-house design team, there is also the option to create something completely new and custom if you have a singular vision in mind.

Our unique approach to helping you realize your dream begins with the simple principle of listening. Since 1979, our team has actively listened to thousands of ideas, thoughts, and inspirations, and turned them into beautiful homes that truly are as unique as their owner's dreams. We have been proud partners in bringing almost 1,000 dreams to life. Our years of experience and constant desire to lead our industry in all facets of our business bring the "Woodhouse Difference" to each home we build.

Many will say our difference is in our industry-leading 3D modeling technology, which creates beautiful renderings and unique point-of-view fly-through models of homes before they are even built. Others may point to the fact that we support our clients with the industry's only transferable lifetime warranty. Some may say that it is our ability to produce precision-crafted timbers from a variety of species of wood that sets Woodhouse apart from other timber frame manufacturers.

We believe that all the above is true, but what really drives the "Woodhouse Difference" is you, the people who turn dreams into dream homes. It takes a team to build these dreams, from our designers, regional project managers and office staff with nearly 300 combined years of experience. The most important member of our team is you. Join the hundreds of satisfied Woodhouse homeowners who let us listen to their dreams and allow us to earn your trust. Please stop by and experience the "Woodhouse Difference" for yourself.

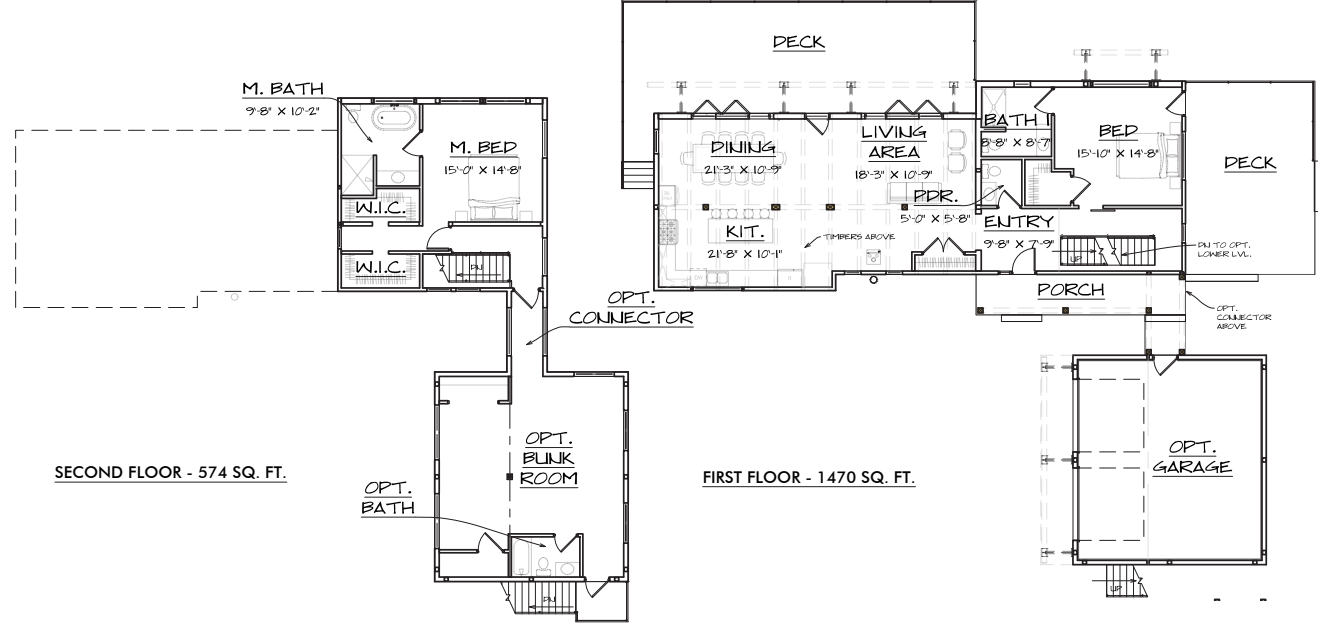
Best Lake Day Home



Cascade

2 BEDROOM, 2.5 BATH - 2,044 SQ.FT.

Contemporary Series



Best Waters-Edge Retreat

WedgeWood

3 BEDROOM, 2.5 BATH - 1981 SQ.FT.

Ranch Home Series



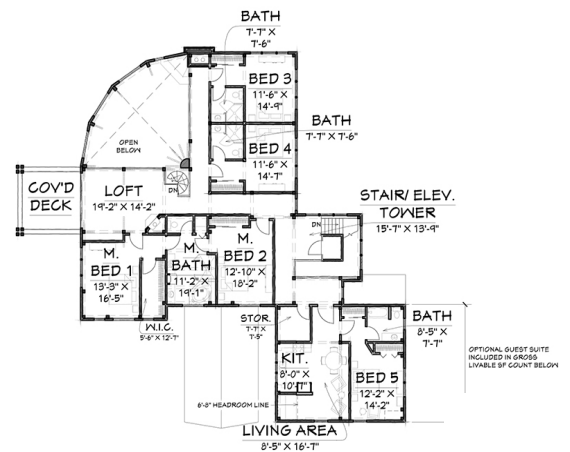
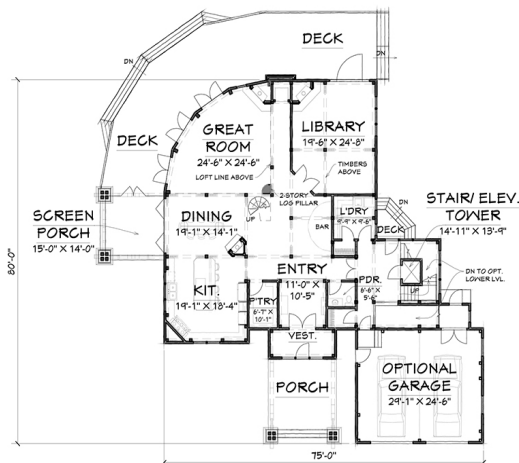
FIRST FLOOR - 1981 SQ.FT.

Best Vacation Home

OceanView

5 BEDROOM, 4.5 BATH - 6,163 SQ. FT.

Coastal Series Homes



Best Waterfront Getaway

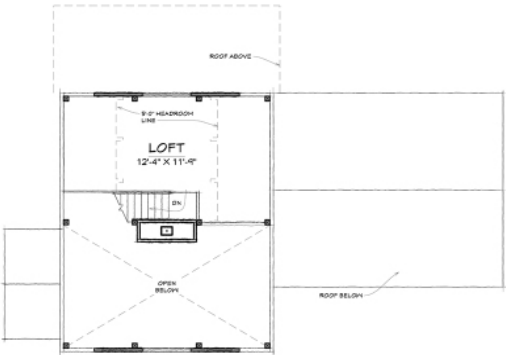
CastleRock

3 BEDROOM, 2 BATH - 1667 SQ.FT.

Cottage Series



FIRST FLOOR - 1504 SQ.FT.



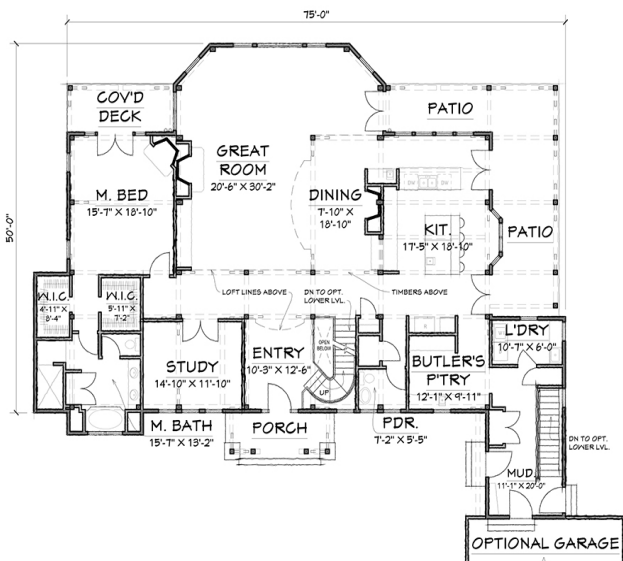
SECOND FLOOR - 163 SQ.FT.

Best Coastal Estate

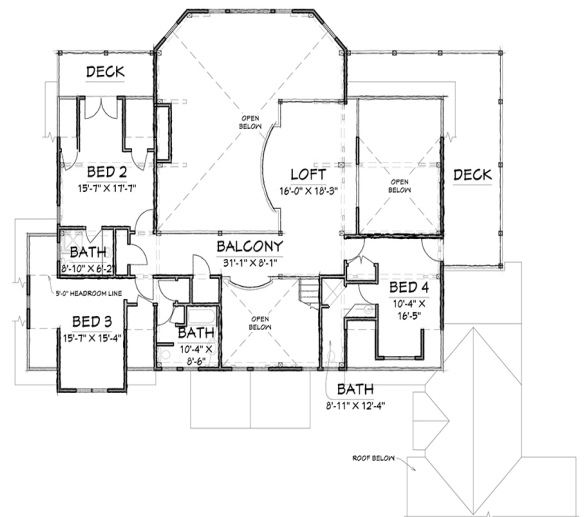
SeaCrest

4 BEDROOM, 4.5 BATH - 4,869 SQ. FT.

Coastal Series Homes



FIRST FLOOR - 3240 SQ.FT.



SECOND FLOOR - 1629 SQ.FT.

HOW MUCH DOES IT COST?

CHECK OUT THE WOODHOUSE DREAM HOME BUDGET CALCULATOR ON OUR WEBSITE TO LEARN HOW MUCH YOUR TIMBER FRAME HOME IS GOING TO COST.



DREAM HOME
BUDGET
CALCULATOR

Woodhouse[®]
THE TIMBER FRAME COMPANY[™]

[TIMBERFRAME1.COM](https://timberframe1.com) |      

WE WOULD LOVE TO TALK WITH YOU ABOUT YOUR UPCOMING
TIMBER FRAME PROJECT. FOR FASTER SERVICE, PLEASE CALL US AT: 800-227-4311