

Woodhouse[®]

THE TIMBER FRAME COMPANY[™]

TOP 10 TIMBER FRAME PLANS THAT RESEMBLE LOG HOMES



Why Choose Timber Frame?

Durability

When massive timbers are coupled with our structural insulated panel (SIP) walls, you get a structure that is more resilient against the impacts of weather and natural disasters such as earthquakes, hurricanes, heavy snow, wildfires, and tornadoes. These are legacy homes, poised to give you and future generations endless, memorable enjoyment.

Energy Efficiency

Our timber frame and SIP building system delivers exceptional energy efficiency that meet, and even exceed, some of the highest standards in the industry. Because Woodhouse SIPs are made with injected liquid polyurethane (PUR) foam, our panels outperform standard SIPs that are made with expanded polystyrene (EPS). Unlike standard SIPs and conventional fiberglass insulation, the R-value (the measurement of how material resists energy loss) of our SIPs does not diminish over the years. This insulation superpower makes our timber frame homes easy to heat and retain heat in cold weather while staying cool during hotter months.

Less Maintenance

All this movement in log walls translates into more maintenance and having to use products specifically developed for the log building to accommodate this movement. Cracks between log courses can develop and if not routinely repaired, this will lead to moisture penetration, rot, and insect infestation.

Preventing this requires periodic staining and sealing (specialized caulking and chinking) to protect the logs from Mother Nature. Depending on the stain used, the positioning of the home on the building site, its relationship to the path of the sun, and the home's design, this maintenance can be needed every few years or every year. South-facing walls, for example, can require sanding and re-staining every year.

Design

Design options for a timber frame home are endless. With no interior load-bearing walls, these homes are fully customizable — walls can be added, shifted, or removed entirely. We can design a custom home from scratch or tailor one of our more than 90 floorplans to fit your lifestyle. In addition to reconfiguring the interior, our timber frame homes allow you to:

- Select any exterior to achieve your desired style – whether it's shou sugi ban, cedar shake, board-and-batten, stone, concrete, or something else entirely including a mix of different finishes.
- Use drywall for interior surfaces of exterior walls and/or the roof ceiling to maximize use of color and alternative finishes.
- Enjoy how the inherent qualities of the timbers bring warmth, authenticity, and definition into your home, naturally.



THE TIMBER FRAME COMPANY™

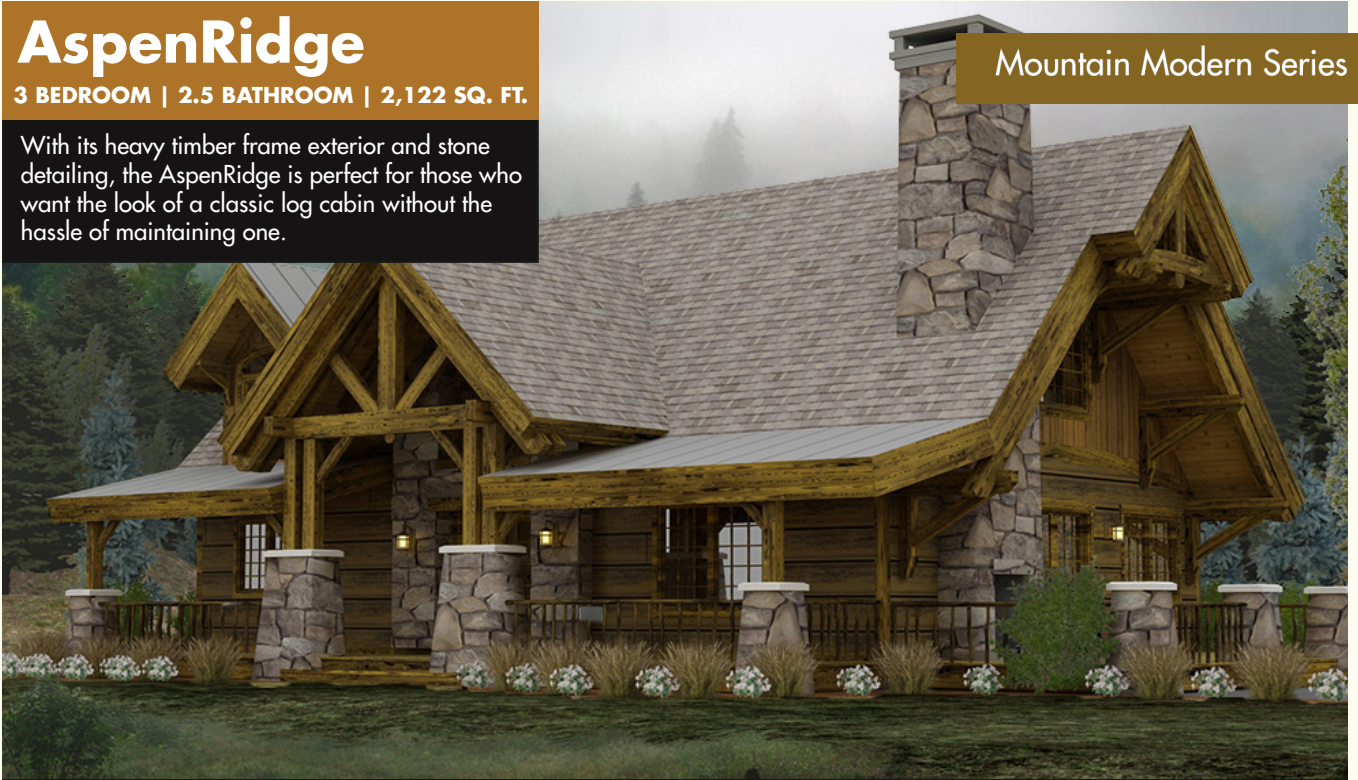
AspenRidge

AspenRidge

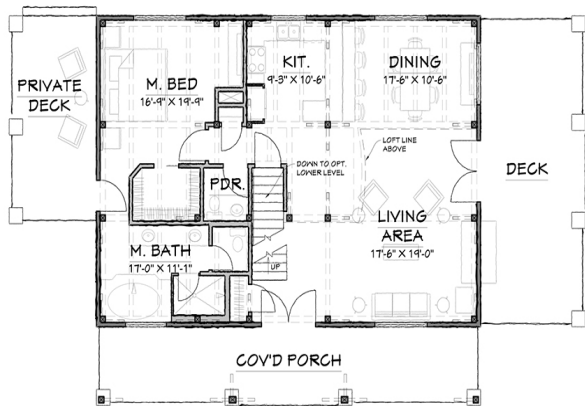
3 BEDROOM | 2.5 BATHROOM | 2,122 SQ. FT.

With its heavy timber frame exterior and stone detailing, the AspenRidge is perfect for those who want the look of a classic log cabin without the hassle of maintaining one.

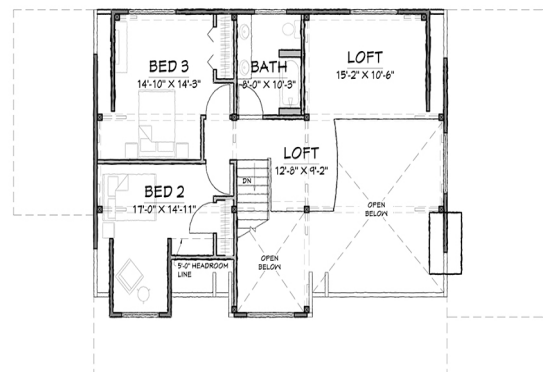
Mountain Modern Series



[VIEW HERE](#)



FIRST FLOOR - 1320 SQ.FT.



SECOND FLOOR - 802 SQ.FT.

GreatCamp

GreatCamp

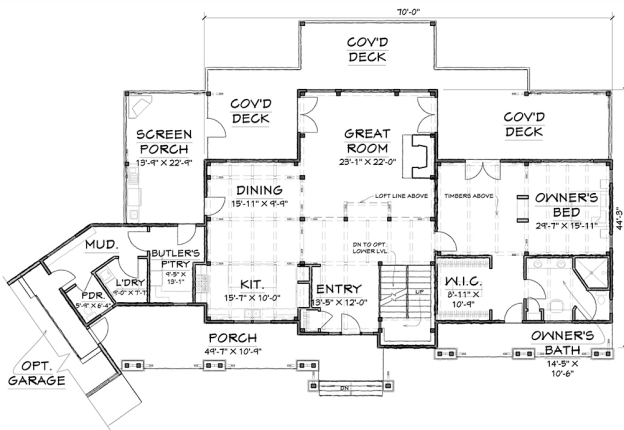
3 BEDROOM | 3.5 BATHROOM | 4,318 SQ. FT.

Boasting an expansive square footage of 4,318 square feet, the GreatCamp is a tribute to the bygone Adirondack style. With 3 bedrooms and 3.5 bathrooms, this timber frame home is perfect for summer gatherings or a romantic evening for two relaxing by the fire.

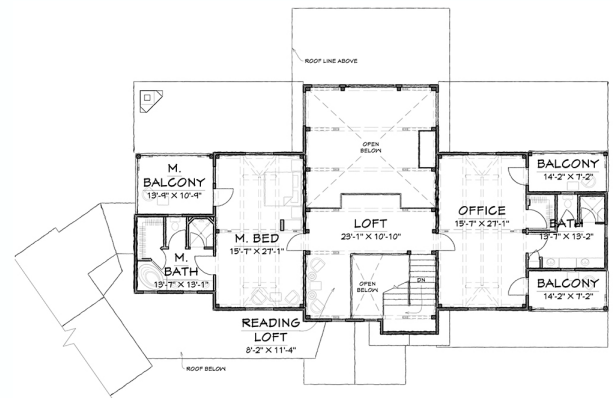
Adirondack Series



VIEW HERE



FIRST FLOOR - 2552 SQ. FT.



SECOND FLOOR - 1766 SQ. FT.

TupperLake Prow

TupperLake Prow

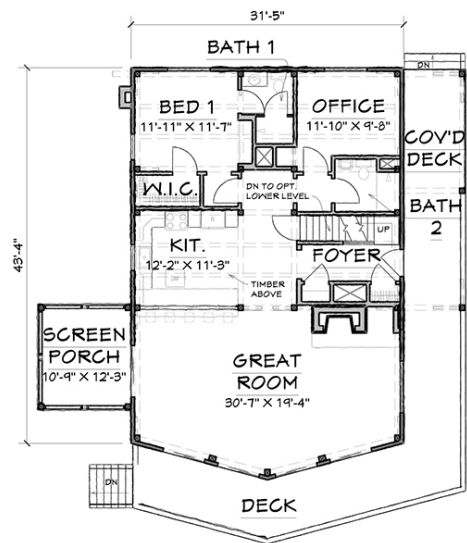
3 BEDROOM | 2.5 BATHROOM | 2,165 SQ. FT.

This house flawlessly merges the interior with the great outdoors using the two-sided prow windows to let in landscape views, creating the feel of a luxurious treehouse.

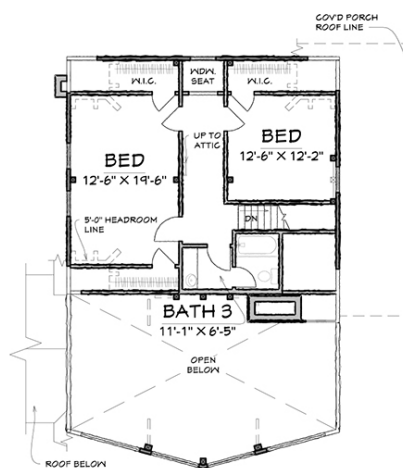
Adirondack Series



VIEW HERE



FIRST FLOOR - 1391 SQ.FT.



SECOND FLOOR - 774 SQ.FT.

SummitView

SummitView

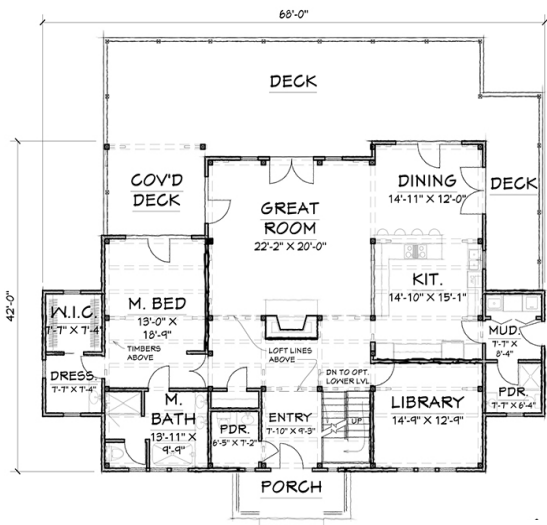
3 BEDROOM | 4.5 BATHROOM | 3,120 SQ. FT.

The expansive (3,120 square feet to be exact), three-bedroom and four and a half-bath home complete with a beautiful deck and porch features all kinds of design elements that make it as unique as it is inviting.

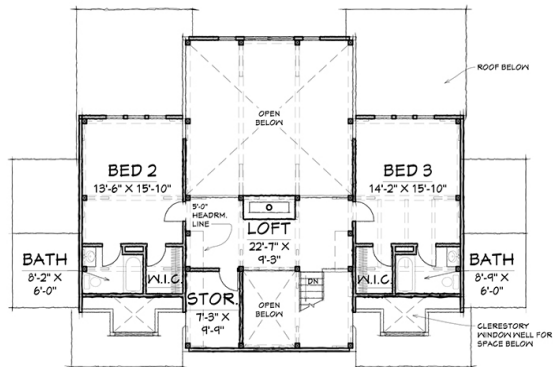
Lake Home Series



[VIEW HERE](#)



FIRST FLOOR - 2226 SQ.FT.



SECOND FLOOR - 894 SQ.FT.

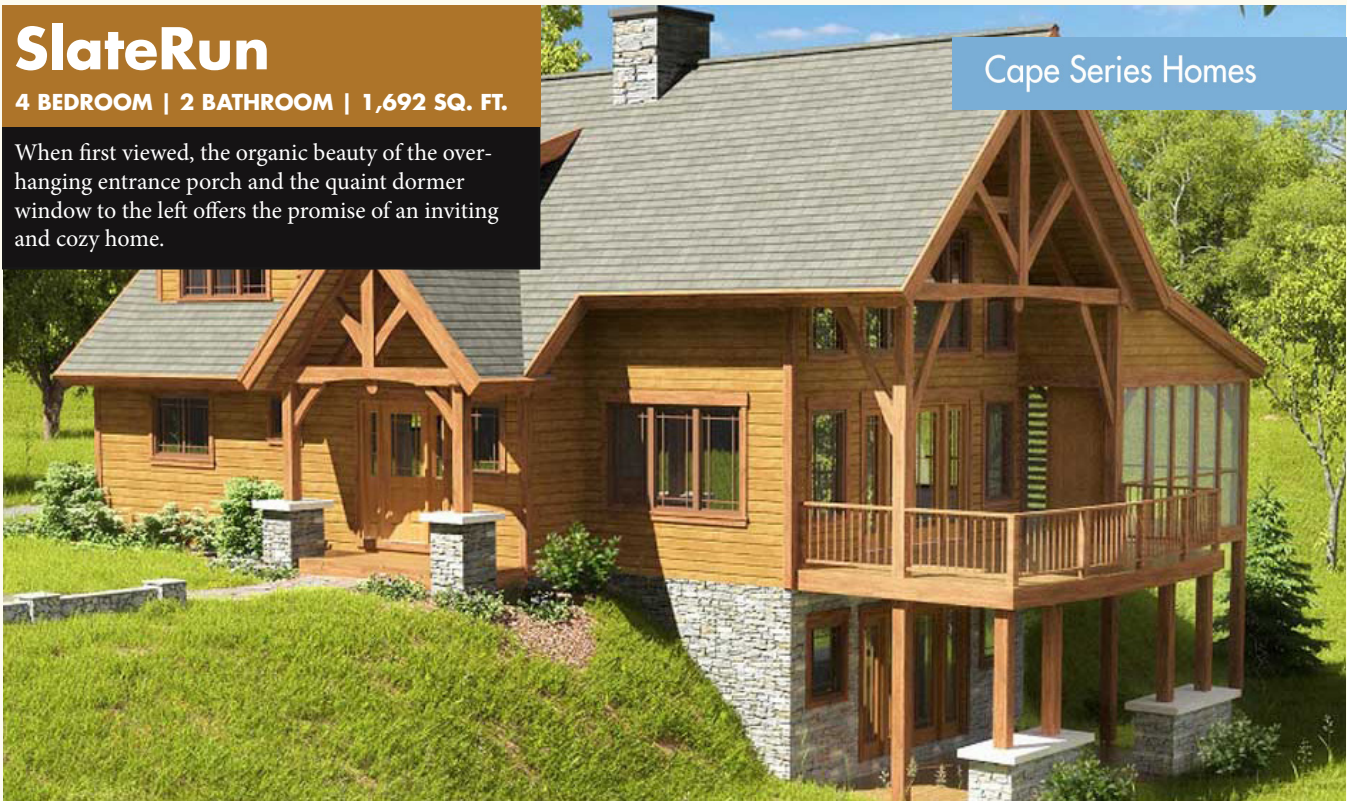
SlateRun

SlateRun

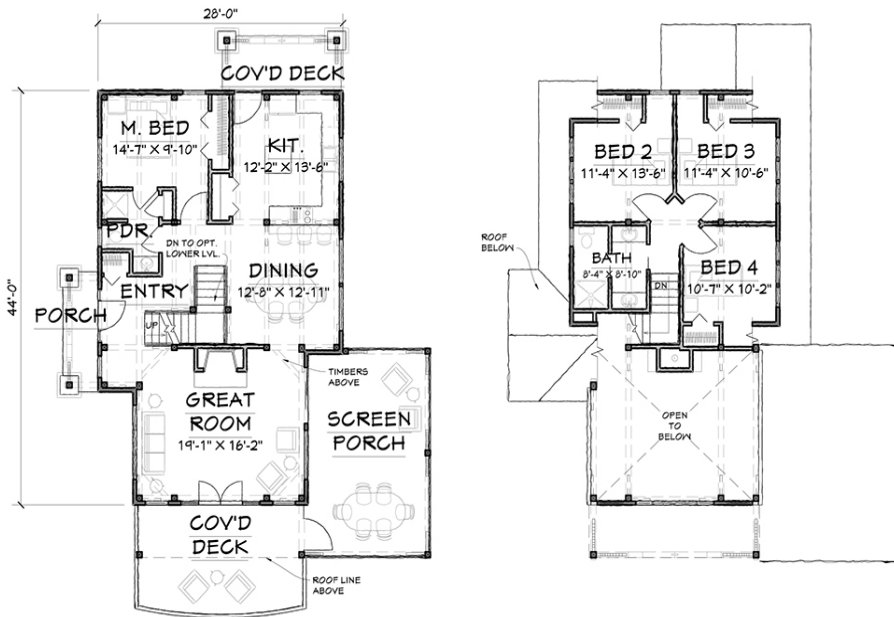
4 BEDROOM | 2 BATHROOM | 1,692 SQ. FT.

When first viewed, the organic beauty of the overhanging entrance porch and the quaint dormer window to the left offers the promise of an inviting and cozy home.

Cape Series Homes



[VIEW HERE](#)



GrizzlyPeak

GrizzlyPeak

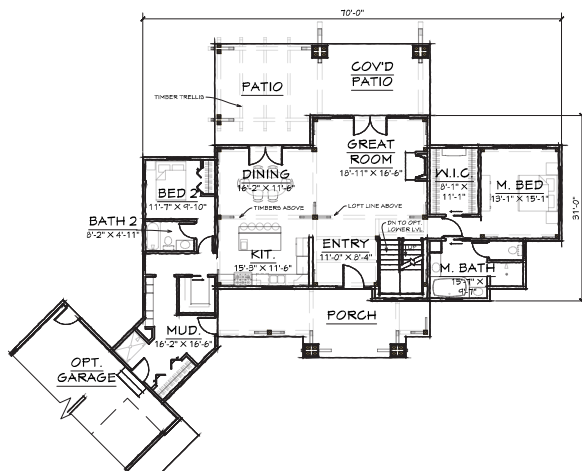
4 BEDROOM | 4 BATHROOM | 2,683 SQ. FT.

The GrizzlyPeak is a part of the Woodhouse Mountain Home Series, and has all the style elements of a classic alpine home.

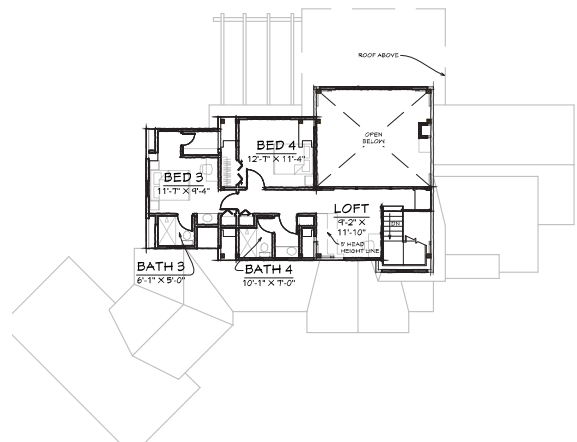
Mountain Series



[VIEW HERE](#)



FIRST FLOOR - 1970 SQ. FT.



SECOND FLOOR - 713 SQ. FT.

GlenOak

GlenOak

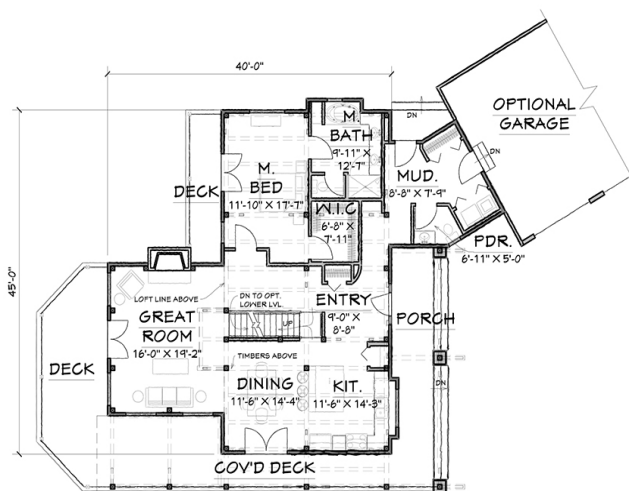
3 BEDROOM | 2.5 BATHROOM | 2,544 SQ. FT.

This spacious craftsman home is a perennial favorite with enduring appeal. The flexible floor plan lends itself to various options so you can truly personalize this home.

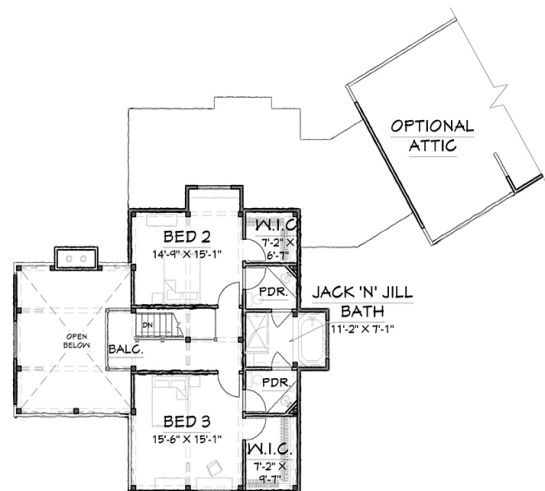
Craftsman Series



[VIEW HERE](#)



FIRST FLOOR - 1579 SQ.FT.



SECOND FLOOR - 965 SQ.FT.

Tumalo V1

Tumalo V1

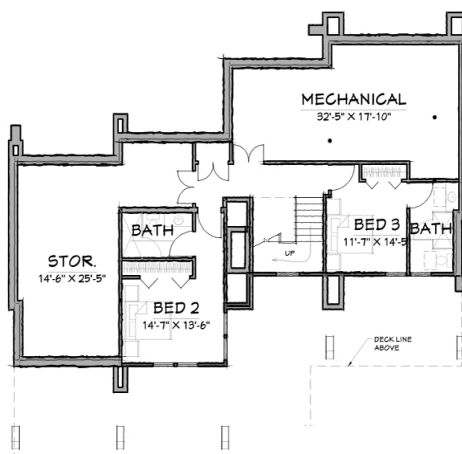
3 BEDROOM | 3 BATHROOM | 2,829 SQ. FT.

With its enormous deck and porch, Tumalo V1 makes it easy to celebrate the surrounding landscape while its exterior timbers allow it to beautifully merge with the scenery.

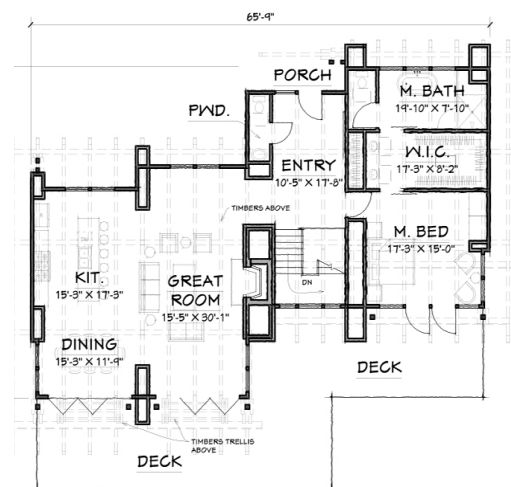
Modern Series



[VIEW HERE](#)



LOWER LEVEL -764 SQ. FT.



FIRST FLOOR -1981 SQ. FT.

PoplarPeak

PoplarPeak

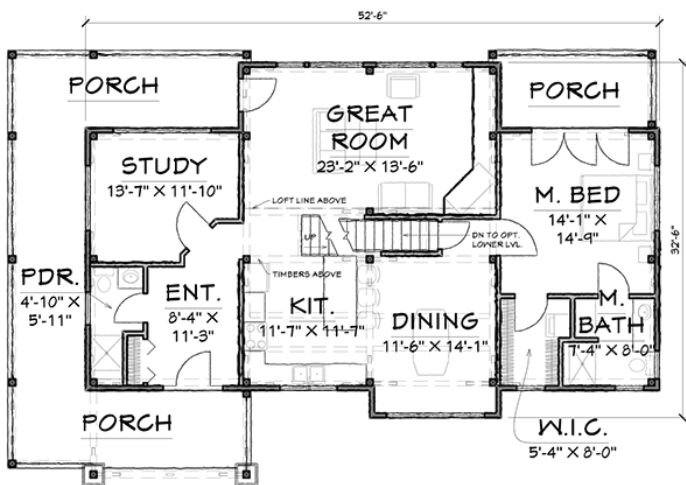
1 BEDROOM | 2 BATHROOM | 1,795 SQ. FT.

The PoplarPeak is a stunning home that combines the exquisite craftsmanship of a timber home with the rustic coziness of a traditional log cabin.

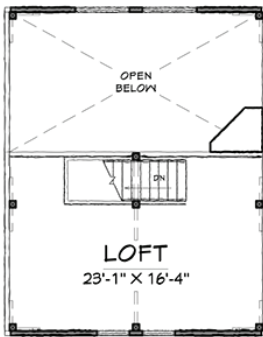
Cabin Home Series



[VIEW HERE](#)



FIRST FLOOR - 1392 SQ.FT.



SECOND FLOOR - 403 SQ.FT.

PineRidge

PineRidge

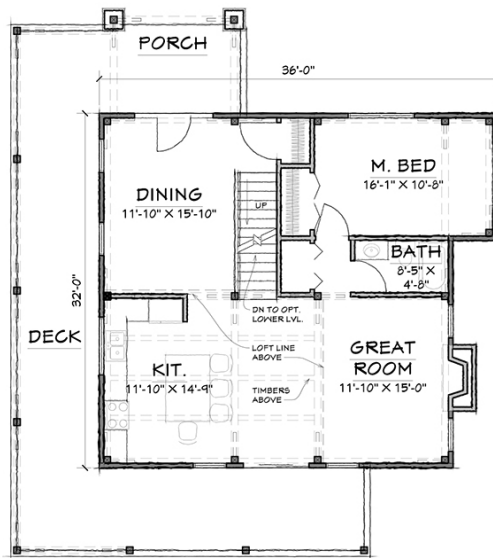
3 BEDROOM | 2.5 BATHROOM | 2,120 SQ. FT.

Do you love the style of a log cabin but don't want the hassle of maintaining one? Then the PineRidge is the timber frame home for you.

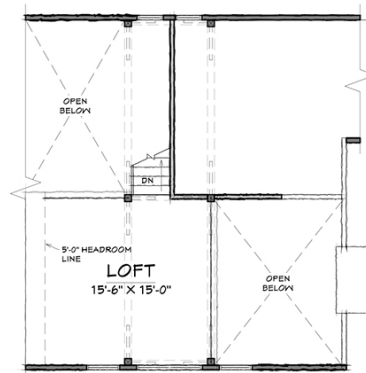
Cabin Home Series



[VIEW HERE](#)



FIRST FLOOR -1028 SQ.FT.



SECOND FLOOR -281 SQ.FT.

HOW MUCH DOES IT COST?

CHECK OUT THE WOODHOUSE DREAM HOME BUDGET CALCULATOR ON OUR WEBSITE TO LEARN HOW MUCH YOUR TIMBER FRAME HOME IS GOING TO COST.



DREAM HOME
BUDGET
CALCULATOR

Woodhouse[®]
THE TIMBER FRAME COMPANY[™]

[TIMBERFRAME1.COM](https://www.timberframe1.com) |      

WE WOULD LOVE TO TALK WITH YOU ABOUT YOUR UPCOMING
TIMBER FRAME PROJECT. FOR FASTER SERVICE, PLEASE CALL US AT: 800-227-4311