

TOP 5 PLANS FOR THE HOLIDAYS



Woodhouse
THE TIMBER FRAME COMPANY™

TUMALO

TUMALO

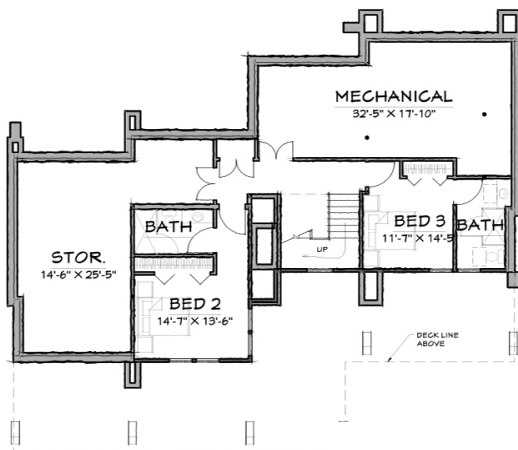
3 BEDROOM | 3 BATHROOM | 2,829 SQ. FT.

With its enormous deck and porch, Tumalo V1 makes it easy to celebrate the surrounding landscape while its exterior timbers allow it to beautifully merge with the scenery.

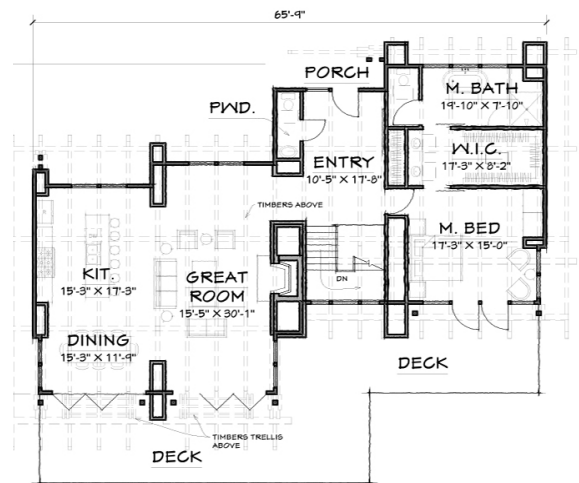
Modern Series



[VIEW HERE](#)



LOWER LEVEL -764 SQ.FT.



FIRST FLOOR -1981 SQ.FT.

DUCLAIR

DUCLAIR

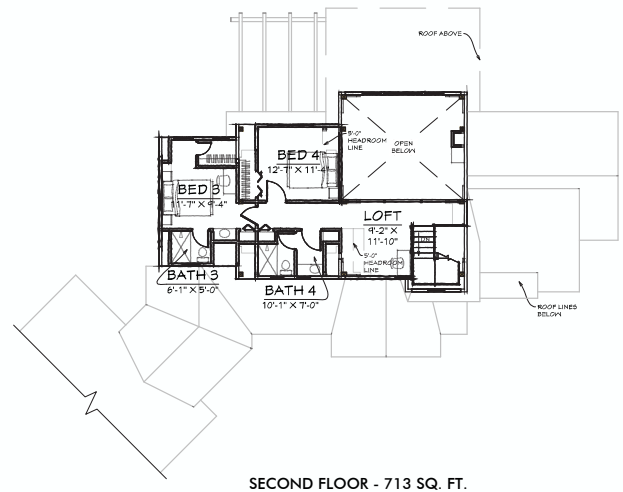
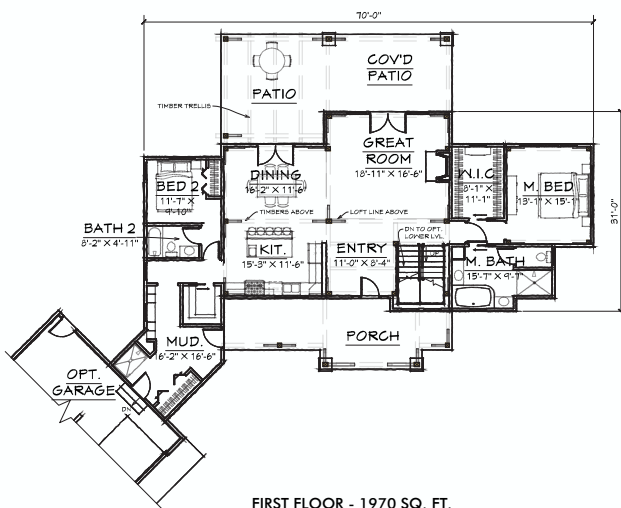
4 BEDROOM | 4 BATHROOM | 2,683 SQ. FT.

As part of our Lake Homes Series, the DuClair takes advantage of the slopes typically found around glacial lakes with the inclusion of multiple elevations that provide sweeping views of the breathtaking surroundings.

Lake Home Series



[VIEW HERE](#)



MILFORD

MILFORD

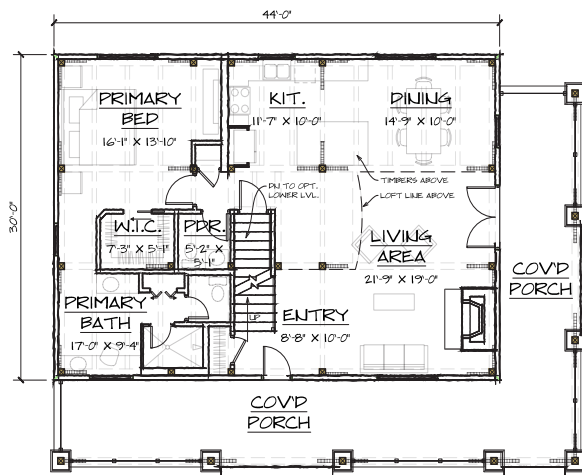
3 BEDROOM | 2.5 BATHROOM | 2,120 SQ. FT.

Sporting the forever-popular 3 bedrooms and 2.5 bathroom configuration, the Milford brings a quiet elegance to the table, using stone and timber to create a natural aesthetic that blends with the surroundings.

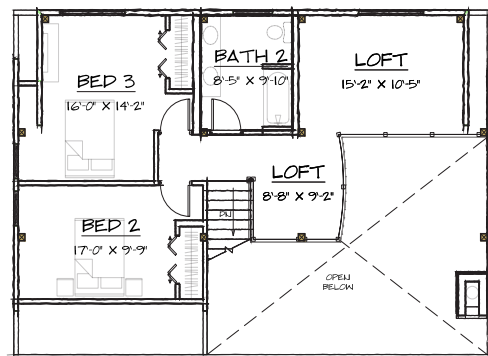
Modern Farmhouse Series



[VIEW HERE](#)



FIRST FLOOR - 1320 SQ. FT.



SECOND FLOOR - 800 SQ. FT.

SEQUOIAVALLEY

SEQUOIAVALLEY

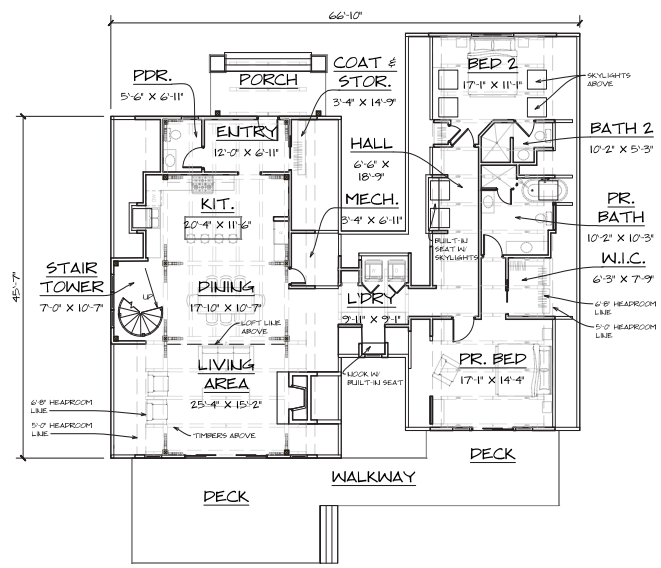
3 BEDROOM | 3.5 BATHROOM | 2,600 SQ. FT.

The SequoiaValley is the bigger companion of the AlpineValley at a spacious total of 2,600 square feet. As you enter you will find yourself in a naturally lit timber-exposed living space including the kitchen, dining, and living area.

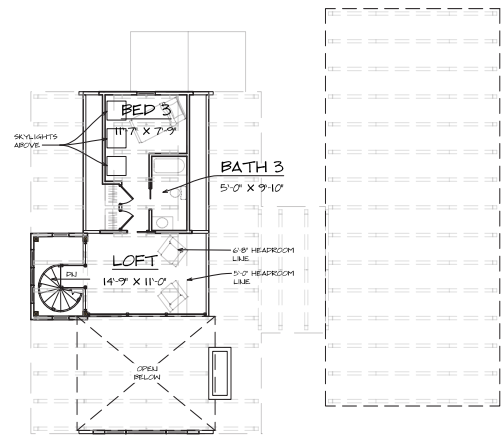
A-Frame Series



VIEW HERE



FIRST FLOOR - 2217 SQ. FT.



SECOND FLOOR - 383 SQ. FT.

ROCKYRIDGE

ROCKYRIDGE

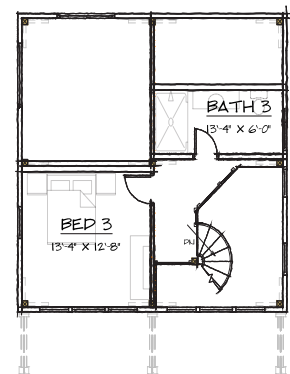
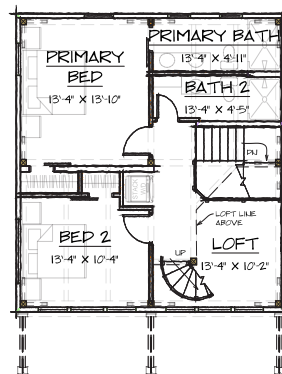
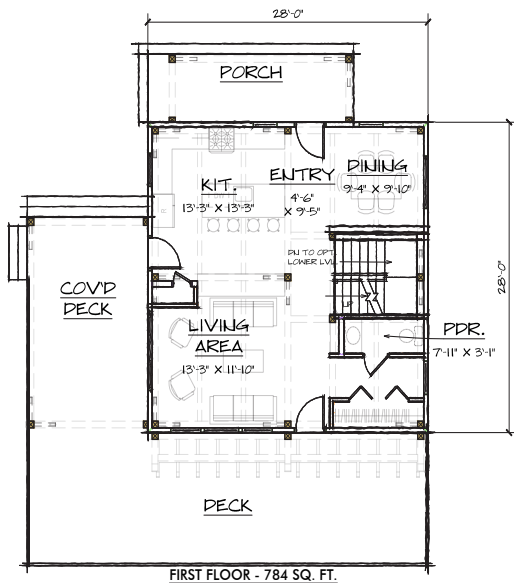
3 BEDROOM | 3.5 BATHROOM | 1,866 SQ. FT.

Centered around massive floor-to-ceiling windows that span all three levels, this design offers abundant natural light and easy access to scenic mountain views outside.

Mountain Modern Series



VIEW HERE





Woodhouse®

THE TIMBER FRAME COMPANY™

100+ PREDESIGNED FLOOR PLANS

[VIEW HERE](#)

WOODHOUSE

800-227-4311

**READY TO START
YOUR PROJECT?**

[CONTACT US](#)

Woodhouse®

THE TIMBER FRAME COMPANY™

**DREAM HOME
BUDGET CALC**



[TRY HERE](#)

Woodhouse
THE TIMBER FRAME COMPANY™

TIMBERFRAME1.COM | [P](#) [F](#) [S](#) [I](#) [O](#) [C](#)

**WE WOULD LOVE TO TALK WITH YOU ABOUT YOUR UPCOMING
TIMBER FRAME PROJECT. FOR FASTER SERVICE, PLEASE CALL US AT: 800-227-4311**